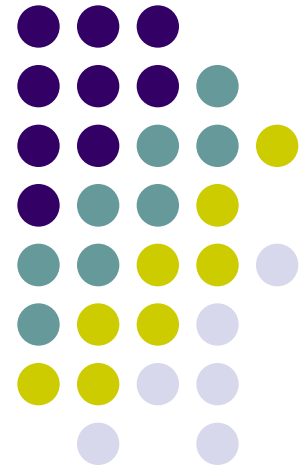
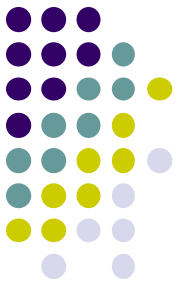


TOYOTA CAMRY

Specification & Installation



-Main spec.



1. Input Spec.

- 1 x Analog RGB Input (Navigation System output)
- 1 x OEM Input

2. Output Spec.

- 1 x OEM Output

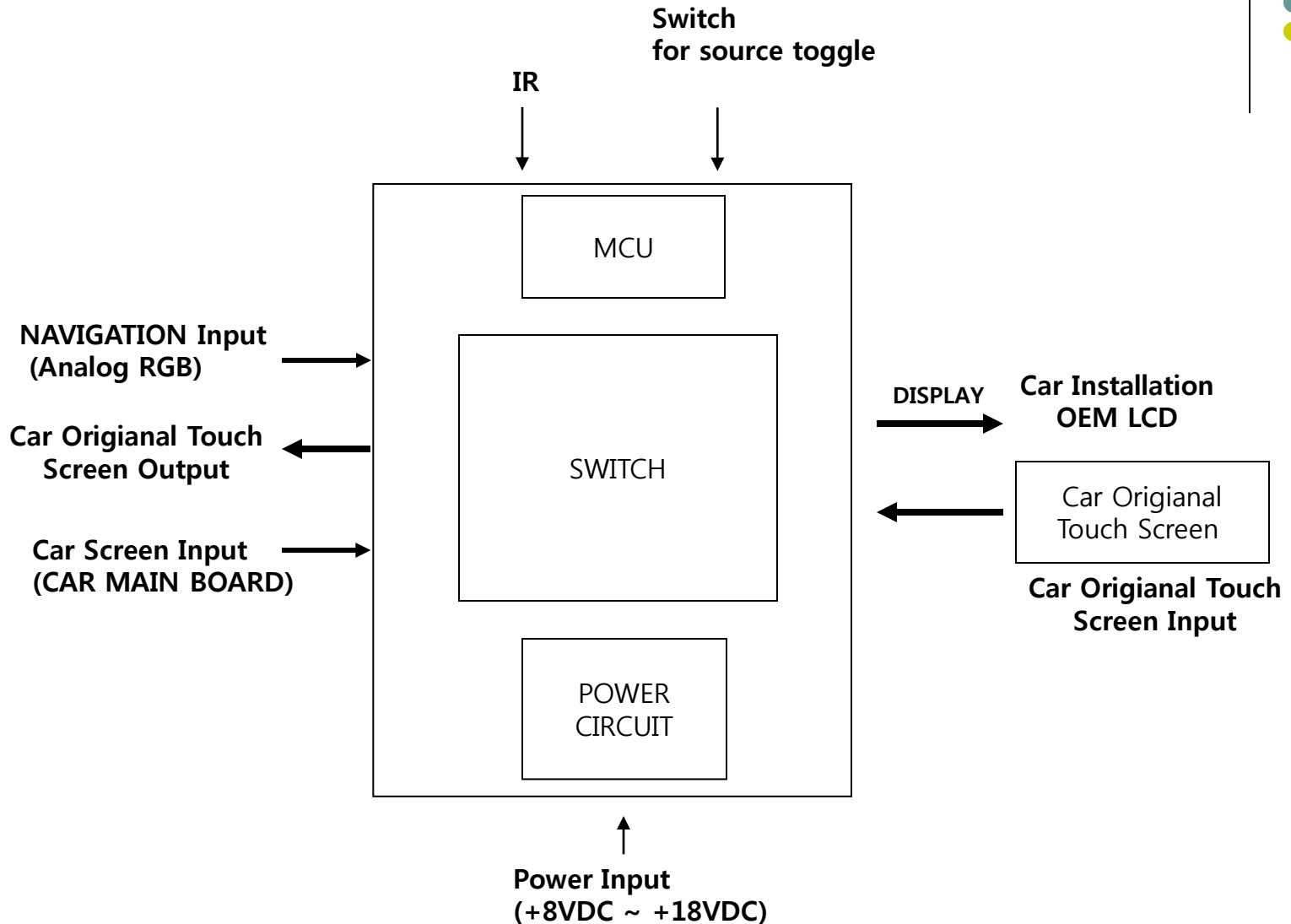
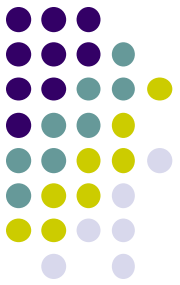
3. Power Spec.

- Input Power : 8VDC ~ 18VDC
- Consumption Power : 12WATT, Max

4. Switch Input mode

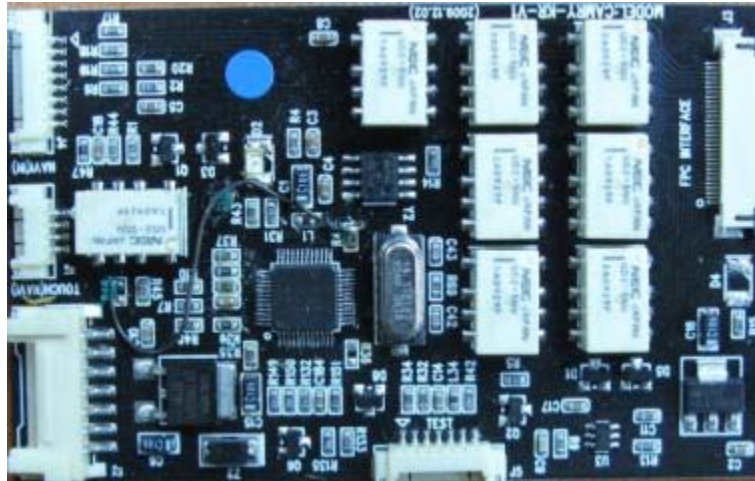
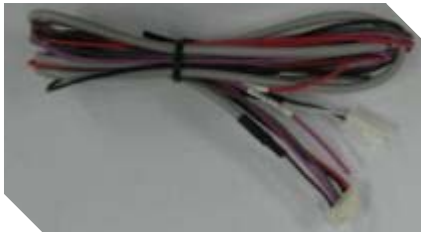
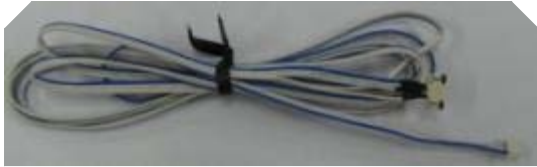
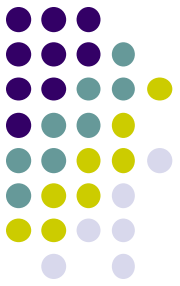
- Possible to switch Input mode with switch for source toggle

- System Composition Diagram



- Product Composition

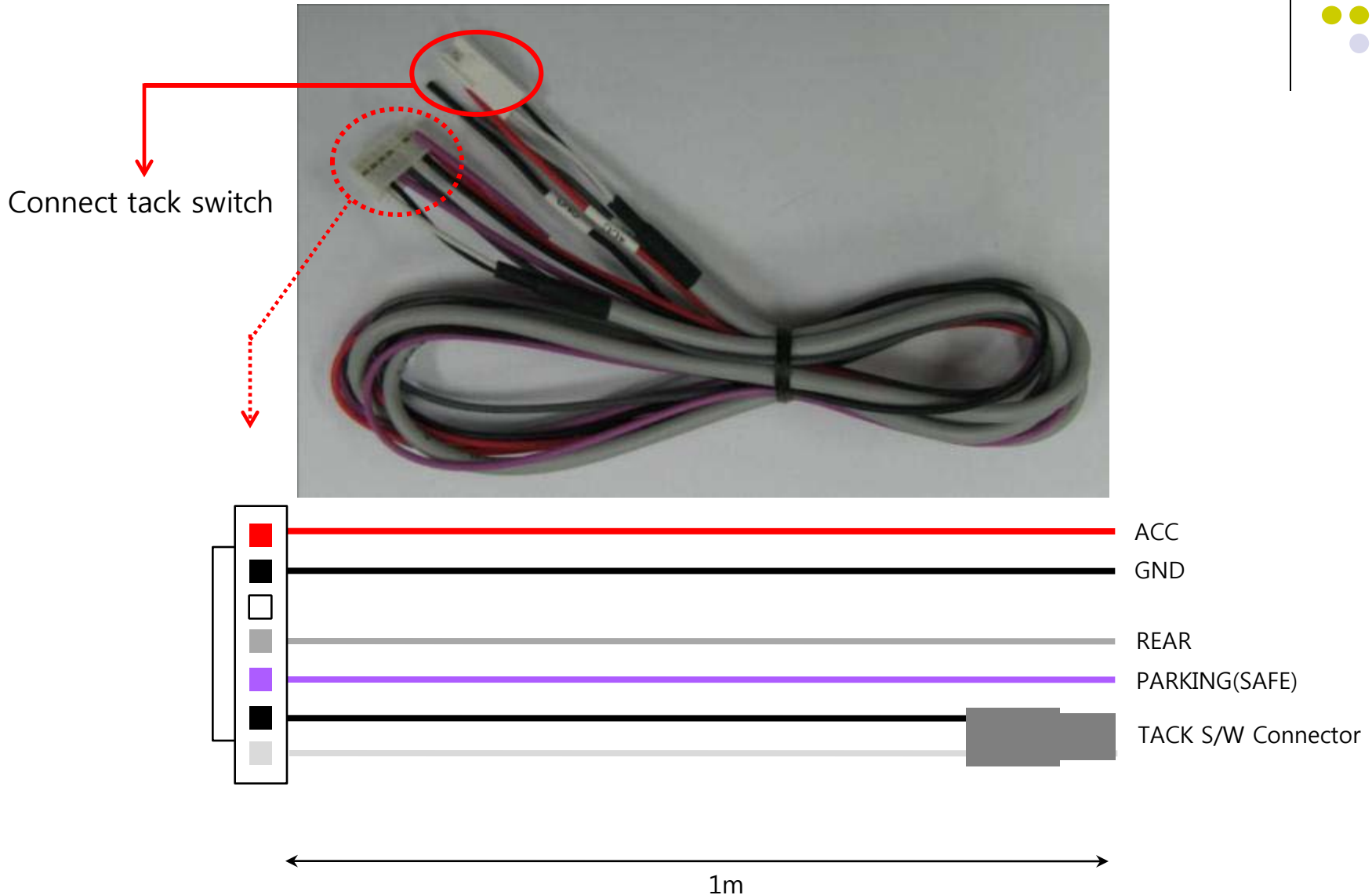
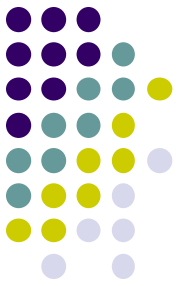
80mm * 50mm



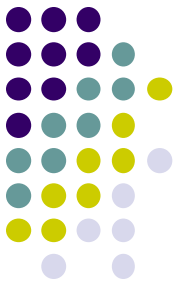
Power cable 1EA
Touch cable 1EA
FPC cable 1EA
Remote control 1EA (Option)

Sub-Board 1EA
RGB cable 1EA
Mode cable 1EA

-Power cable



-Installation guide



1. Take apart Head unit from car
(Monitor should be opened like picture)



2. Disassemble screws for taking apart steel case

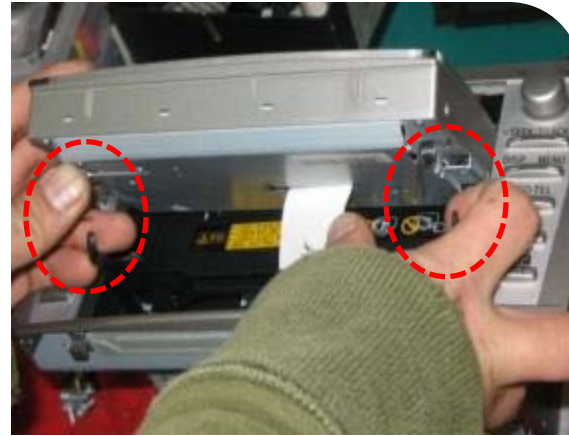


3. Disassemble "Audio controller" like picture (should push it on the right)



4. Disassemble screws in the side of monitor

Installation guide



5. Disassemble screws then take apart the black steel like pictures

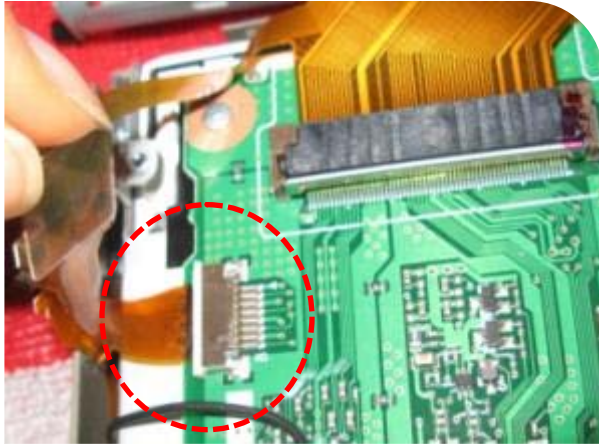
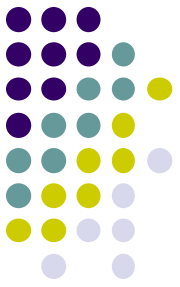


6. Take apart monitor from Head unit then open the monitor's case

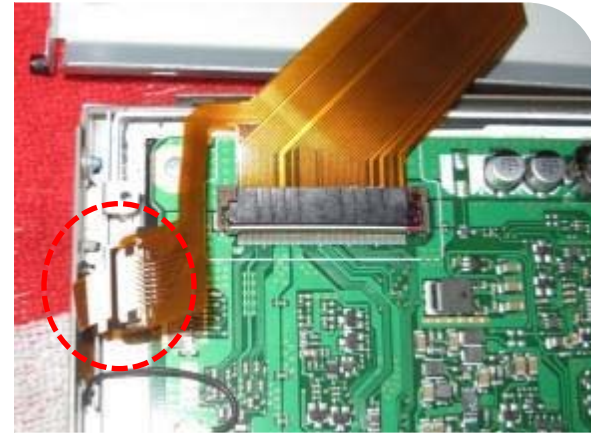


7. Disconnect OEM FPC cable from monitor then connect QDIS FPC cable

Installation guide



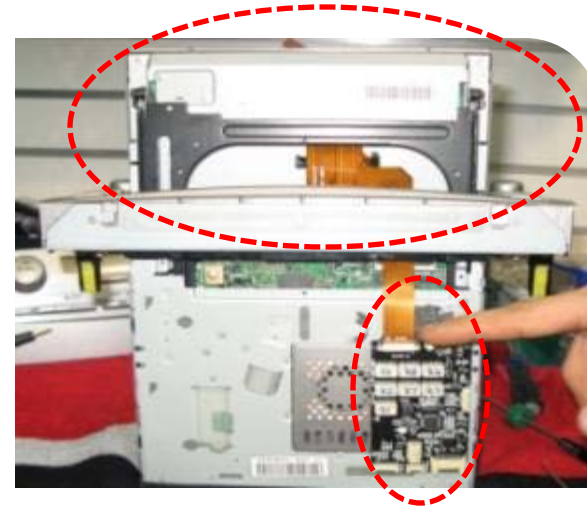
8. Disconnect OEM touch cable from monitor then connect QDIS touch cable



9. Connect OEM touch cable with QDIS cable

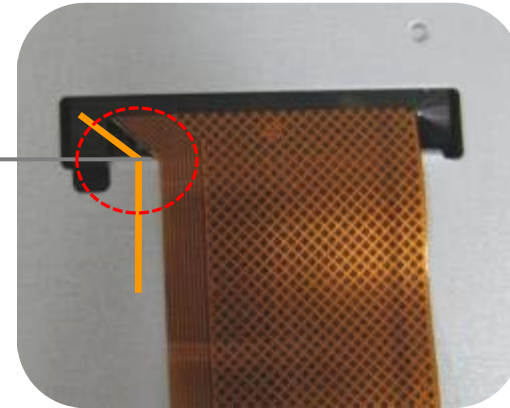
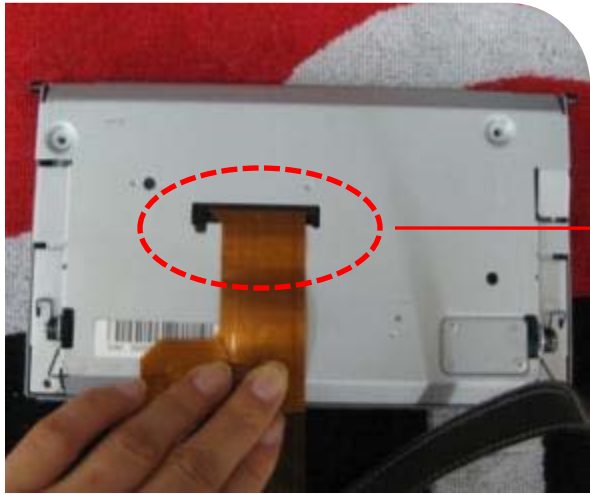
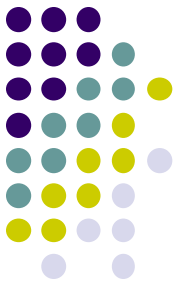


10. Connect QDIS FPC cable to Head unit like picture

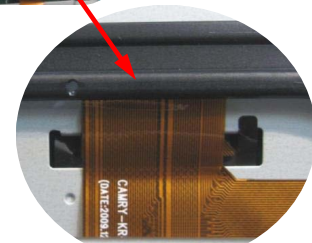
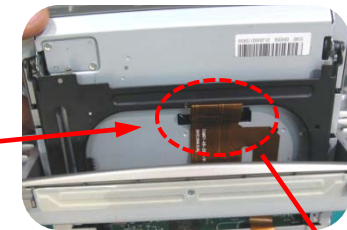
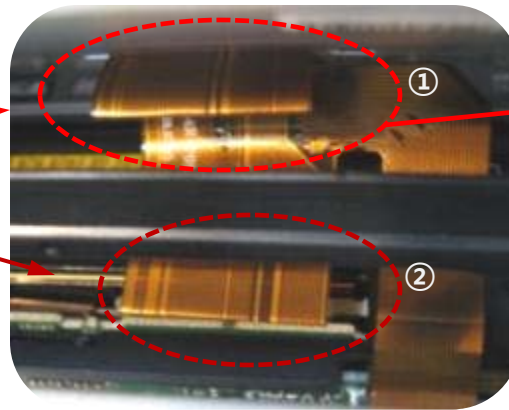


11. After connecting the supplied FPC cable to the daughter board, fix it on Head Unit as 90 degree angle, and pull the FPC cable as strong as possible not cable to be folded.

Installation guide



12. When taking the supplied FPC cable out, carefully make the folded point as 110 degree angle paralleled with the ①'s line.



13. As the pictures, fold ① and ② to outside, push it the space between those to inside. Especially, ① must be pushed inside of monitor supporter. (Otherwise, this can cause some noise when monitor open and closes.)