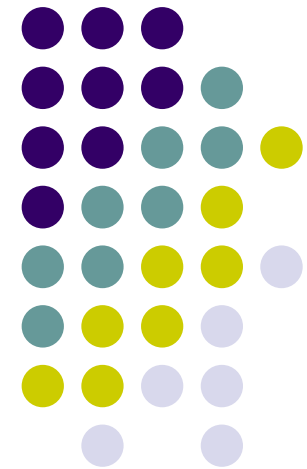


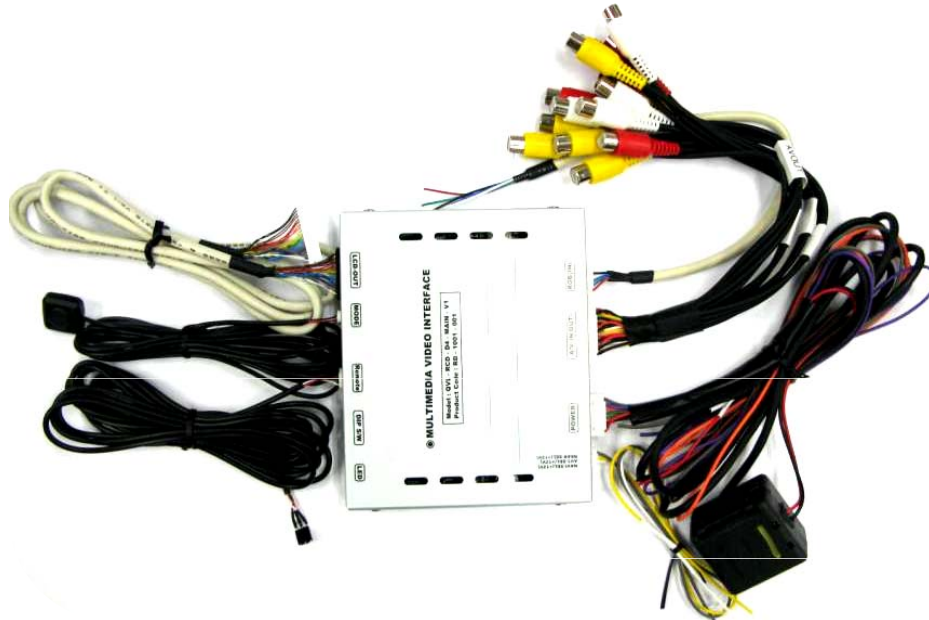
Range ROVER 2010~

INSTALLATION INSTRUCTION

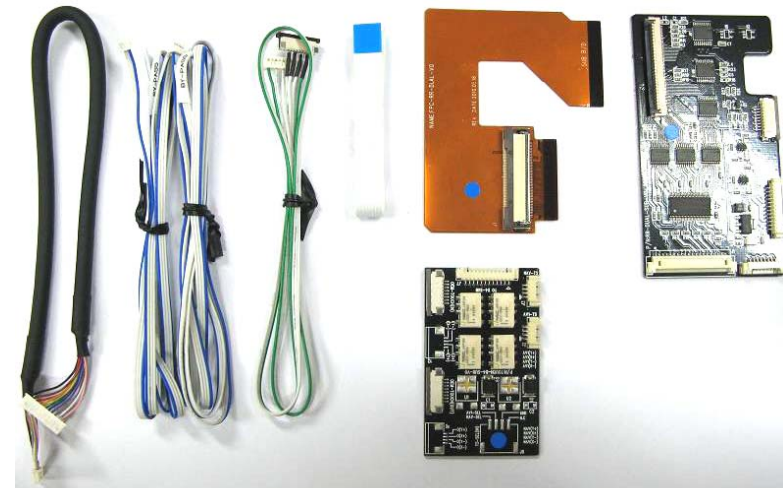
Model : Range Rover



-Parts (Range Rover)



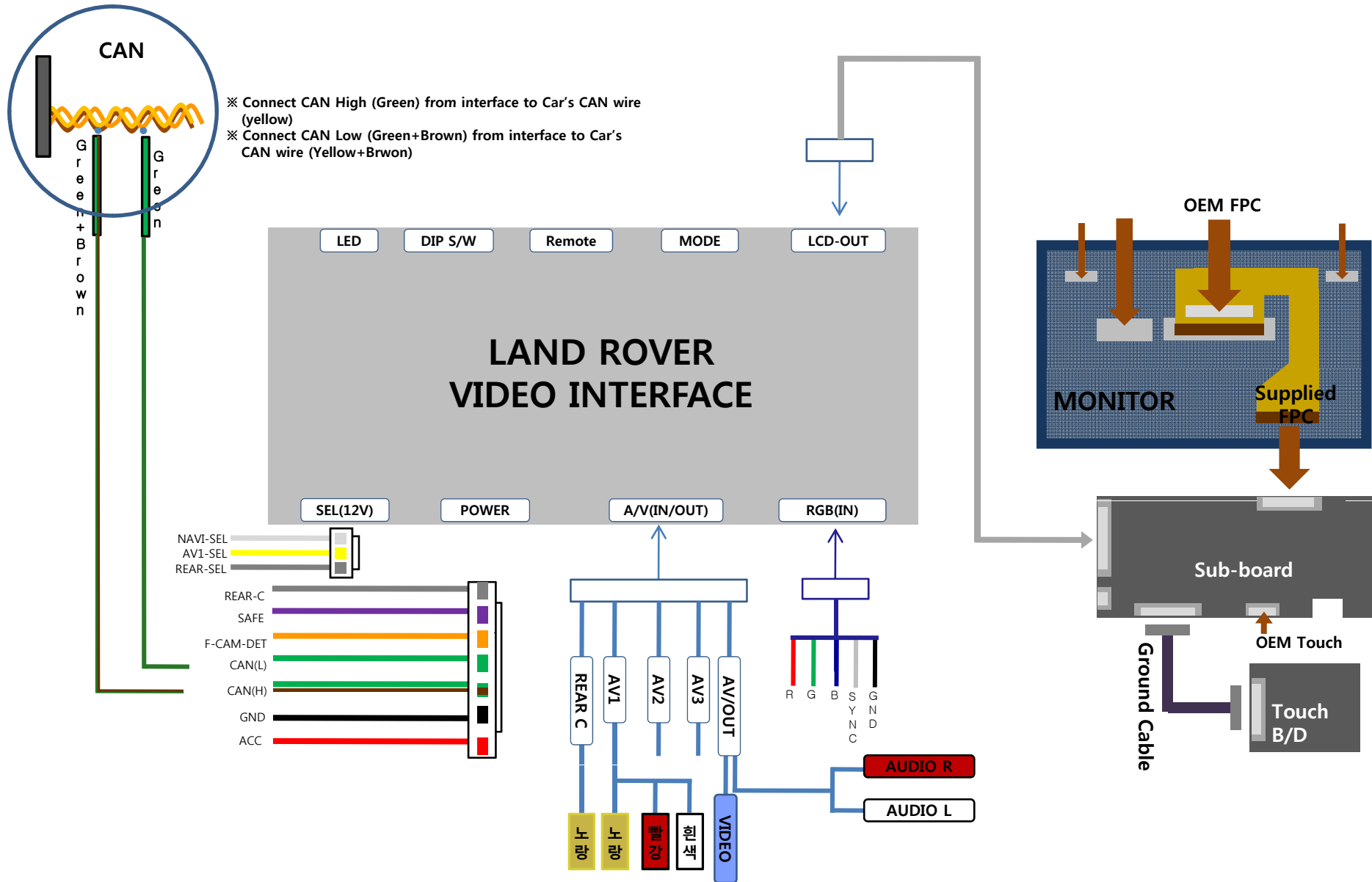
- Remote : 1 Ea
- LVDS Cable : 1 Ea
- RGB In Cable : 1 Ea
- Toggle S/W : 1 Ea
- Touch Board : 1 Ea
- FPC Cable : 1 Ea
- Touch cable : 1 Ea



- Power Cable : 1 Ea
- A/V Cable : 1 Ea
- Ground Cable : 1 Ea
- Sub-Board : 1 Ea
- SEL (12V) Cable : 1 Ea
- FFC Cable : 1 Ea
- BY-PASS Cable : 2 Ea

-Installation Diagram(Range Rover)

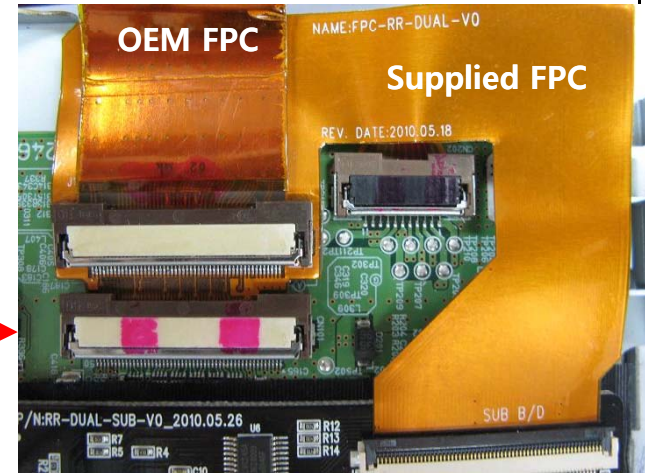
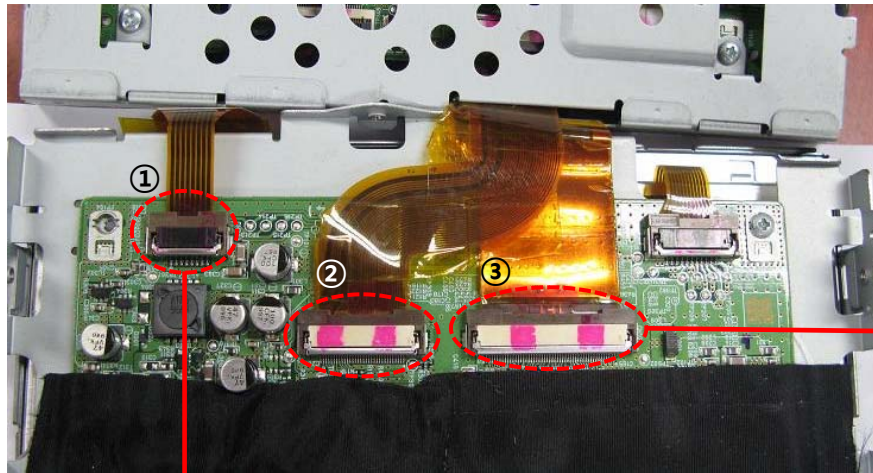
※Remark : Interface power must be connected with Monitor Power



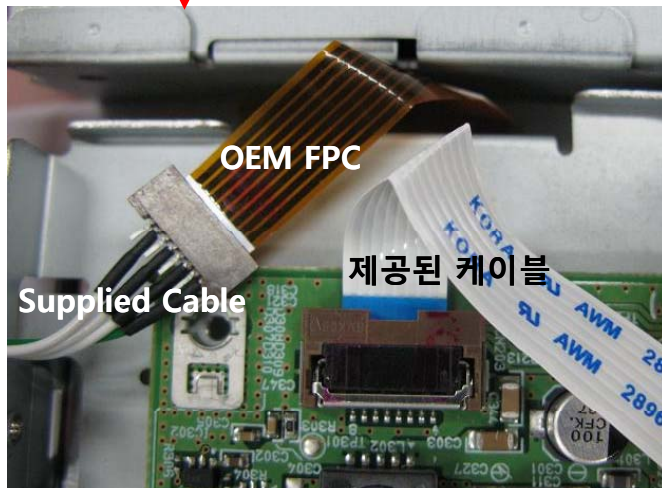
-Installation Instruction (Range Rover)



1. Take out an OEM touch cable and FPC Cable from a Monitor like below photo. (② FPC cable's separation is just for easier installation for a while, not permanent separation)



2. Connect a supplied FPC cable to the sub-board as a photo and then connect ② cable which was taken out on Step 1. back as it used to be connected.

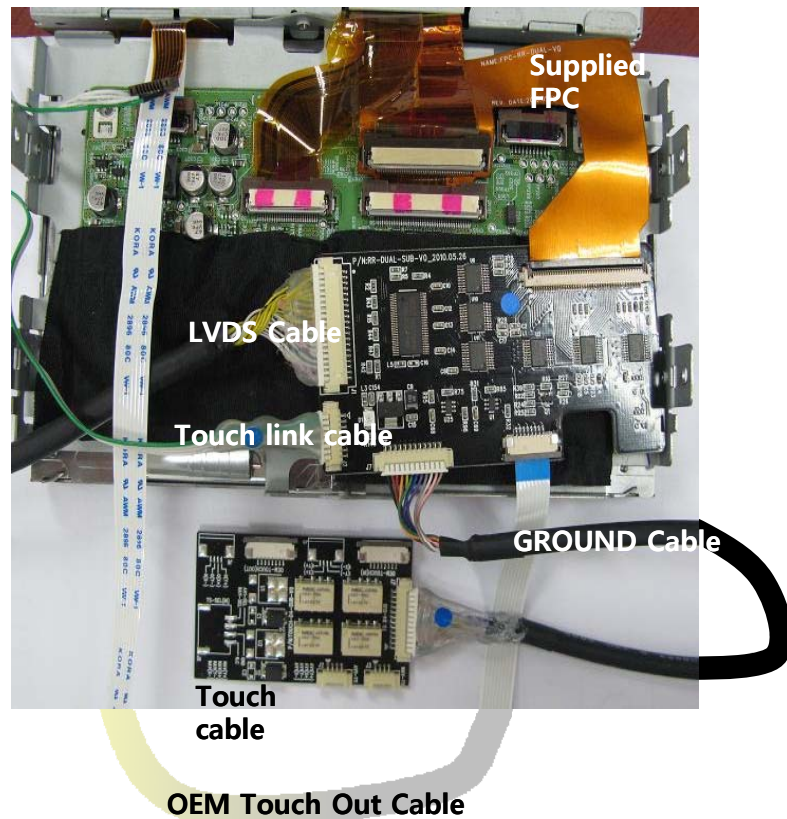


3. After taking a touch cable out, plug a supplied cable.

-Installation Instruction (Range Rover)



4. Connect touch board to a sub-board.



5. Find out Yellow&Yellow+Green twisted wires behind of monitor and connect to CAN wires from a power cable.

CAN High : Yellow + Brown
CAN Low : Yellow

