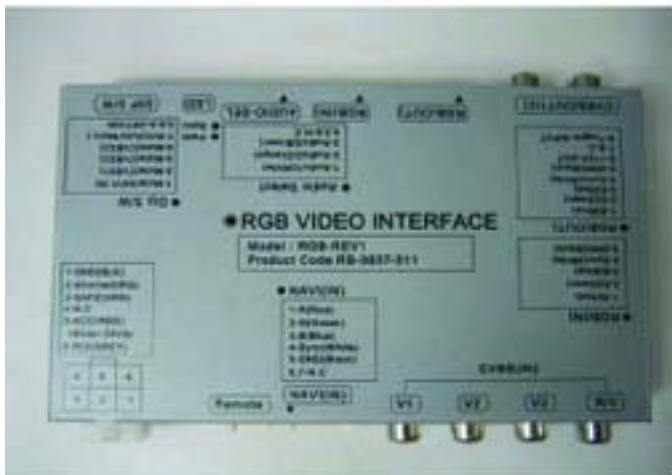


Mercedes Benz S-Class W220 Installation/Connection Manual



*** Parts ***

1) RGB VIDEO INTERFACE



2) REMOTE CABLE (IR)



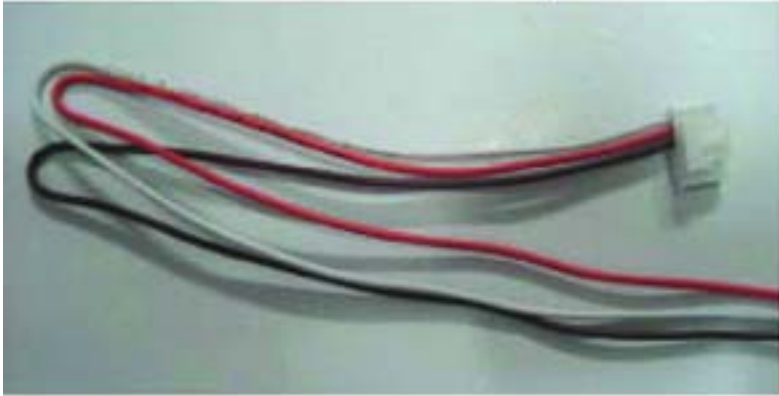
3) NAVI CABLE (7pin)



4) RGB - IN cable 5 pin



5) AUDIO - SEL Cable 6 pin



6) POWER Cable



7) S class board



*Put the cover back



*Connect FCC IN and FCC OUT cables to the S CLASS(W220) board

**Put the tape under the S CLASS board.



*Inside the RED circle, Connect with 8 Pin connector from CVBS.

*** The picture of completion ***



%%VERY IMPORTANT%%

As you see the 8pin connector in the same side, the colors from left to right must be the same sequence.



Safety Advices Before Installation

Caution:

Installation requires special knowledge and should be done by trained personnel.

Please read these instructions carefully before you start your work!

Even twice ore more times, if needed.

Please work with caution and patience.

Use suitable and recommended tools only and handle all parts with special attention.

Follow to the regulations concerning the vehicle's electric system.

Remove the ignition key before you start the installation!

Take care that no electric consumers are still switched on!

The car's electric system must be in a state of quiescent current!

Installation may only be done during idle status.

Thereby please pay attention to the car's manufacturer requirements.

This interface is to be used in cars with 12V negative ground only!

*** Installing the CVBS***

* IR Cable: It has receiving part from remote control



* Power Cable



- 1- Ground (black)
- 2- Source (orange)
- 3- Safe (green)
- 4- N.C.
- 5- ACC (red) – Connect to Cigar Jack
- 6- R/V (grey)

* RGB IN



- 1- R (red)
- 2- G (green)
- 3- B (blue)
- 4- Sync (white)
- 5- GND (black)

* RGB OUT



- 1 – R (red)
- 2 – G (green)
- 3 – B (blue)
- 4 – Sync (white)
- 5 – GND (black)
- 6 – +12V out
- 7 – Toggle INPUT
- 8 – N.C

*****ATTENTION*****

****No 7 and No 8 is opposite on the interface.**



* AUDIO - SEL Cable

- 1- Audio 1 (white)
- 2 - Audio 2 (orange)
- 3 - Audio 3 (Brown)
- 4. 5. 6 - N.C.



* NAVI - IN Cable

- 1 - R (red)
- 2 - G (green)
- 3 - B (blue)
- 4 - Sync (white)
- 5 - GND (black)
- 6, 7- N.C.



*CVBS (IN)

- Video 1
- Video 2
- Video 3
- Rear Camera Video

* DIP Switch



!! Look at the ON sign on the DIP Switch !!

It was miss printed. Make sure that down direction means that switches off.

1 - NAVI IN

2 - CVBS 1

3 - CVBS 2

4 - CVBS 3

7 - REAR CAMERA

5,6,8 - OPTION

- If the car has rear monitor, you can connect with those monitors.



***Installation

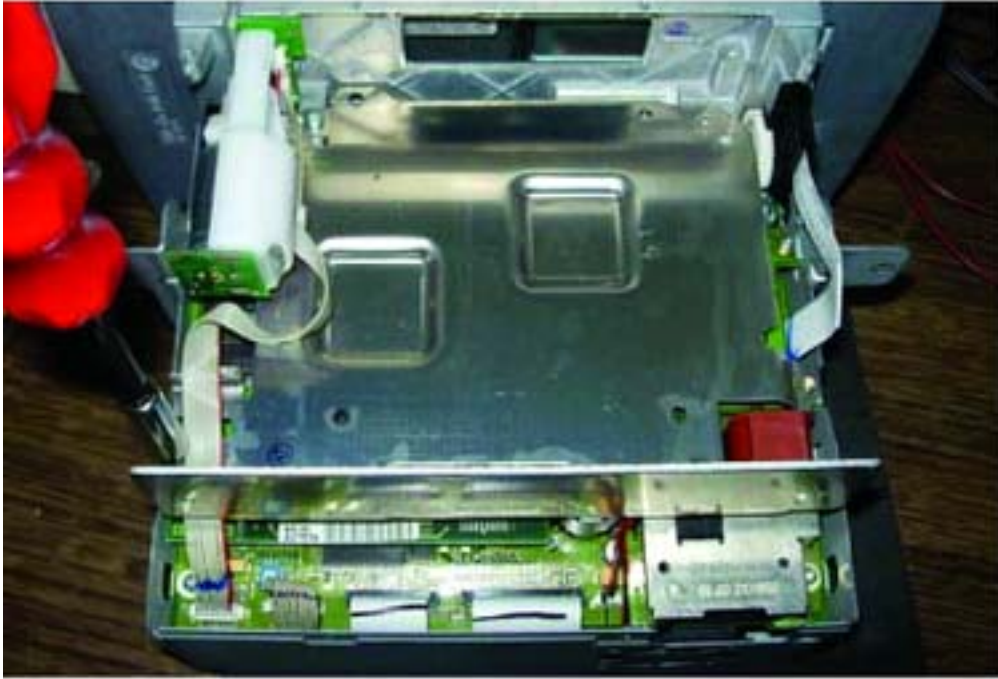
*Monitor



*Open the monitor



*Take out bolts



*This is the picture after removing the silver cover



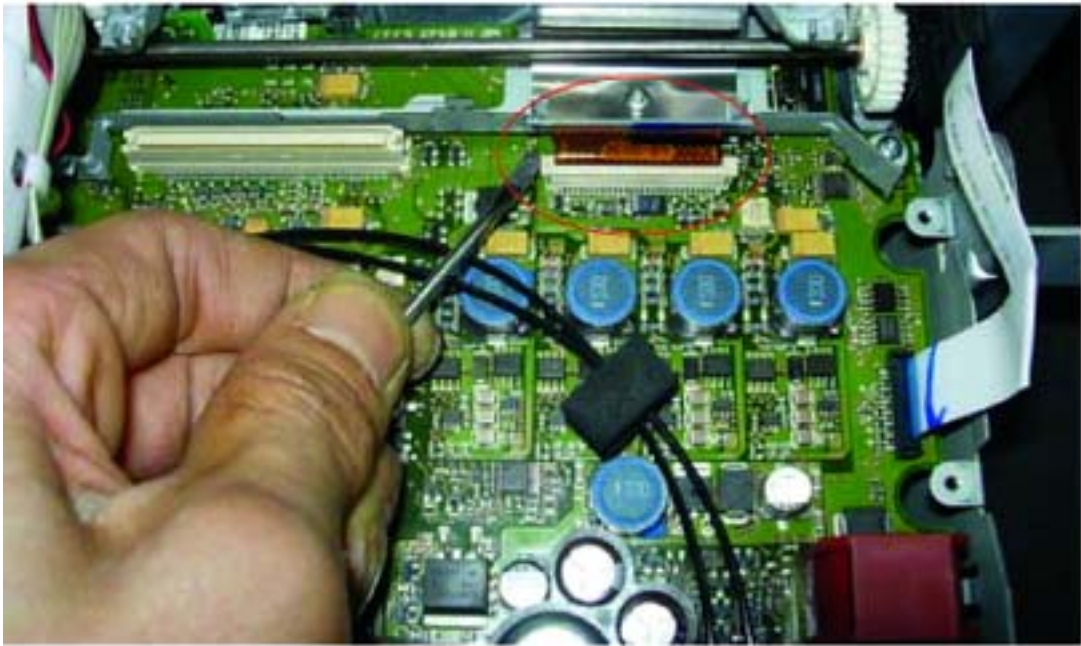
*Remove the bolts



*Remove the green board



*Remove the brown color part



*Unscrew the bolt



* Connect FCC OUT to the brown color part



*Fold FCC like this



*Assemble the green board



*Assemble bolts



*Take out FCC cables

